



AT THE LAVAZZA GROUP, WE WORK EVERY DAY TO REDUCE OUR CARBON FOOTPRINT.

Aware that not all emissions can be reduced, we have embarked on an offsetting strategy by supporting projects that contribute to sustainable development and to the containment of greenhouse gas emissions.

In 2020, we began our journey by offsetting Scope 1 and 2 emissions, i.e., direct greenhouse gas emissions (due, for example, to the burning of methane for heating) or those deriving from the generation of electricity that is then consumed.

In 2022, we intend to continue this process by offsetting the carbon footprint of Lavazza A Modo Mio capsules.

The "ZERO CO2 IMPACT A Modo Mio Capsules" claim stems from this commitment.

What does "offsetting" mean?

Offsetting the greenhouse gas emissions generated by a given activity consists of financing projects that absorb an equivalent amount of CO2. These projects are often reforestation initiatives, but may also relate to energy savings, for example.

Offsetting the greenhouse gas emissions generated makes it possible to declare the products and services involved by this type of activity to be CO2 neutral.

For 2022 A Modo Mio capsules

60,412

tonnes of CO2 eq

were compensated

by supporting the projects:

Guanarè
- URUGUAY -

Kariba
- ZIMBABWE -

The Guanarè project targets high unemployment and precarious working conditions in an area chiefly dedicated to extensive breeding and unsustainable agricultural practices by bringing young people closer to the soil, sustainable agricultural practices and restoration of woodland habitats.

The Kariba project aims to safeguard forests and the environment in a vast area that includes four national parks and eight nature reserves, creating a biodiversity and animal species protection corridor. The project also pursues a series of activities to support social and economic wellbeing of local communities, yielding benefits for the entire region.

Carbon footprint

This is an indicator that quantifies the greenhouse gases emitted during a product's entire life cycle.

Carbon footprint is expressed in kilograms of carbon dioxide equivalent (kg CO2 eq).

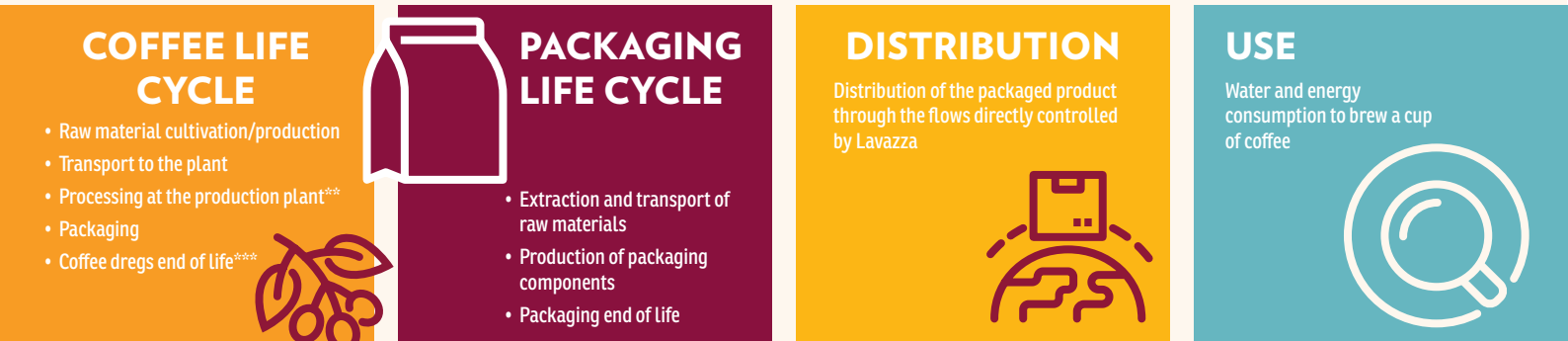
Greenhouse effect

This is the phenomenon caused by the concentration in the atmosphere of what are known as "greenhouses gases", which retain the infra-red radiation emitted by the Earth's surface and atmosphere, allowing our planet to have a suitable temperature for life. The greenhouse effect due to human activity is added to the natural greenhouse effect, further raising the temperature and endangering the balance of the ecosystems and biosphere.

A Modo Mio Capsules Carbon Footprint

To assess the carbon footprint of the A Modo Mio capsules, we used the LCA (Life Cycle Assessment) methodology and followed the international reference standard on product carbon footprint (ISO 14067).

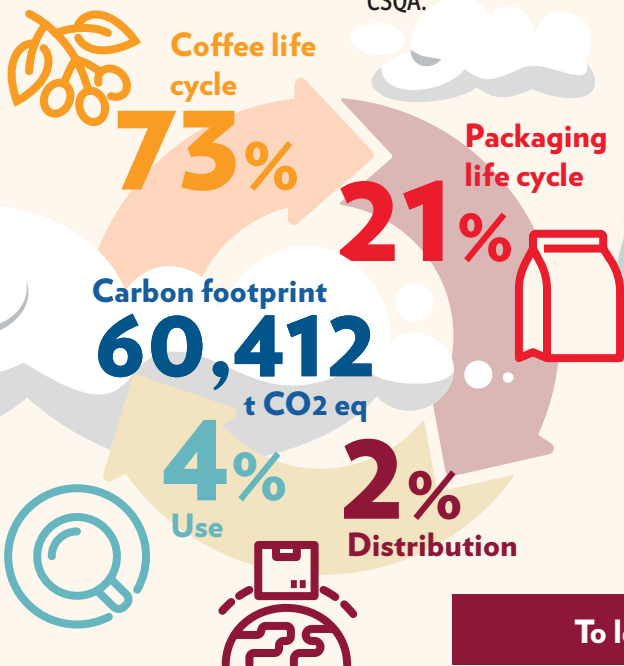
The LCA methodology analyses a product's environmental impact through all the steps of its life cycle, from raw materials to production, transportation, use and discharge. The life cycle of A Modo Mio includes the phases described in the following scheme:



** Raw materials other than coffee are processed by Lavazza suppliers and are therefore transported to the Lavazza plant.

*** As soluble beverages dissolve completely, they do not generate waste.

The impact offset for 2022



Reduction activity

Lavazza is committed to defining and implementing reduction plans at corporate level and to product ecodesign. A Modo Mio capsules benefit from emission reduction and process efficiency activities in accordance with the plans adopted at the corporate level, with the aim of increasing energy efficiency, using renewable energy sources and optimising packaging and the logistics chain. The 2022 benefits in terms of environmental impact reduction with regard to A Modo Mio capsules will be reported during the year-end assessment.

To learn more read the full report